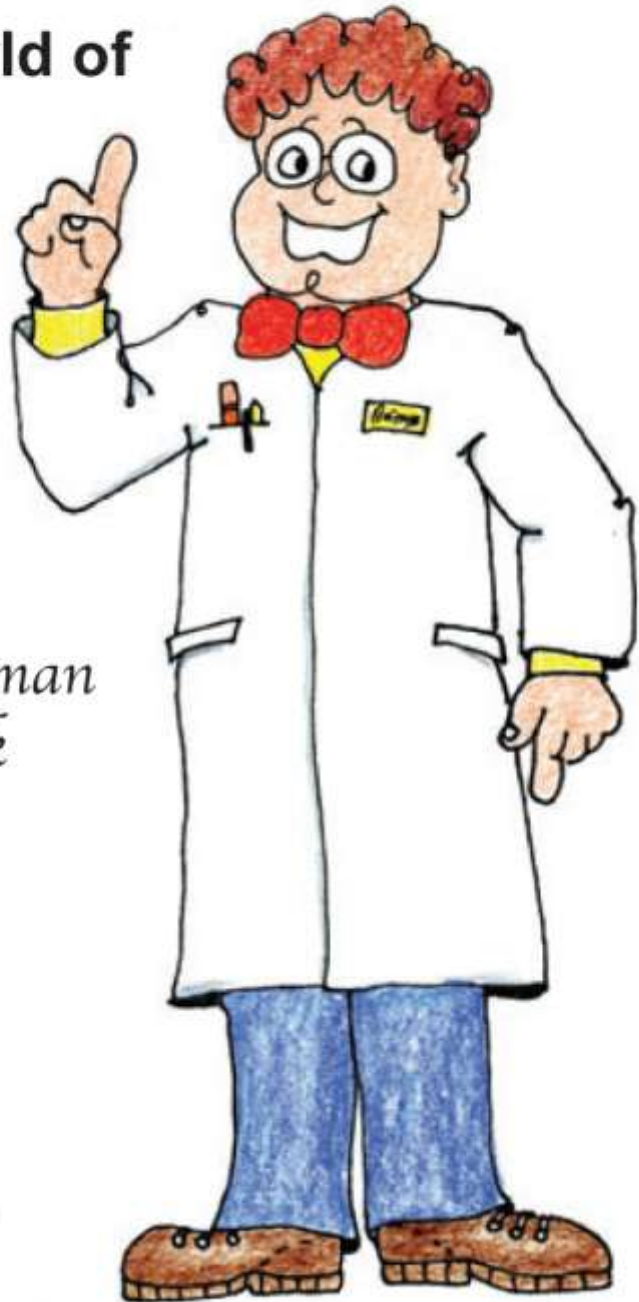


# Draw *and* Write

Through History

**Napoleon to  
Lady Liberty: The World of  
the 1800's**

*Written by Carylee Gressman  
Illustrated by Peggy Dick*



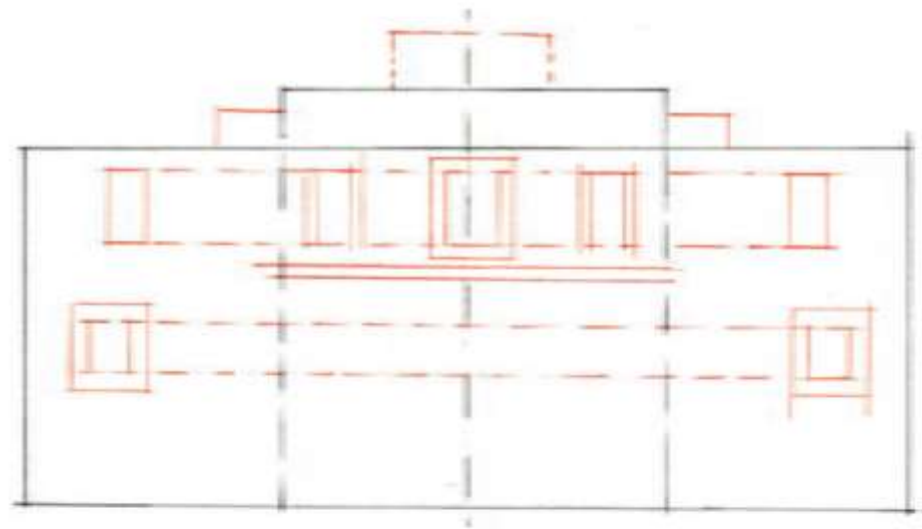
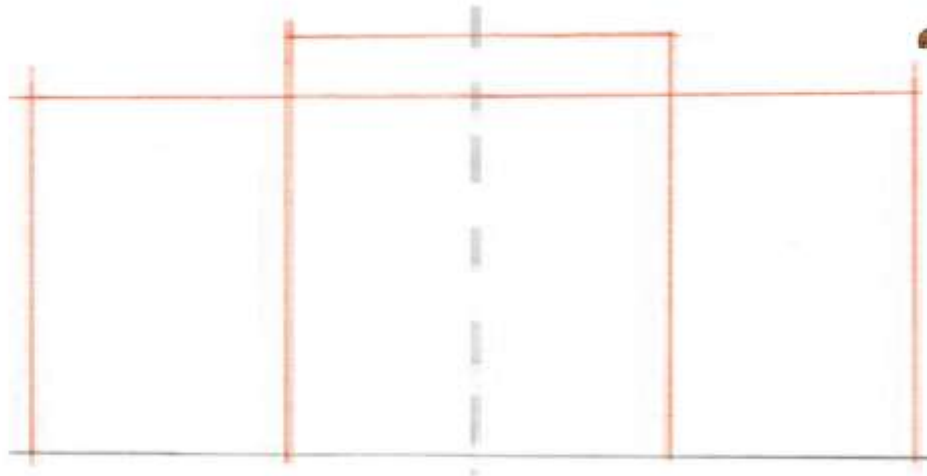
**CPR Publishing ◆ Fennimore, Wisconsin**

The Alamo was originally built as a Catholic mission in 1724. During the 1800's, it housed both Spanish soldiers and Texan rebels at different times. In 1836, 189 Texan rebels died defending the Alamo against 4,000 or more Mexican soldiers. Their bravery inspired others and eventually led to Texas winning its independence from Mexico.



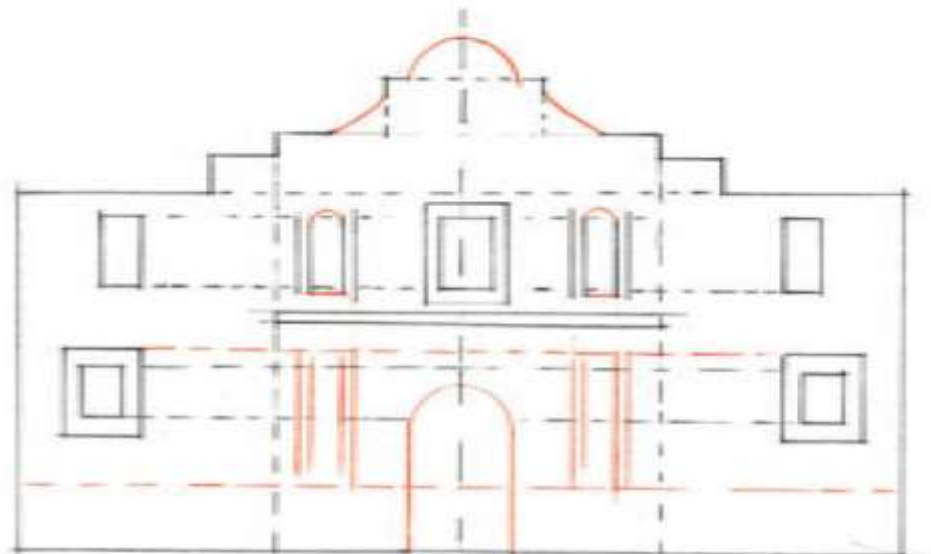
## The Alamo

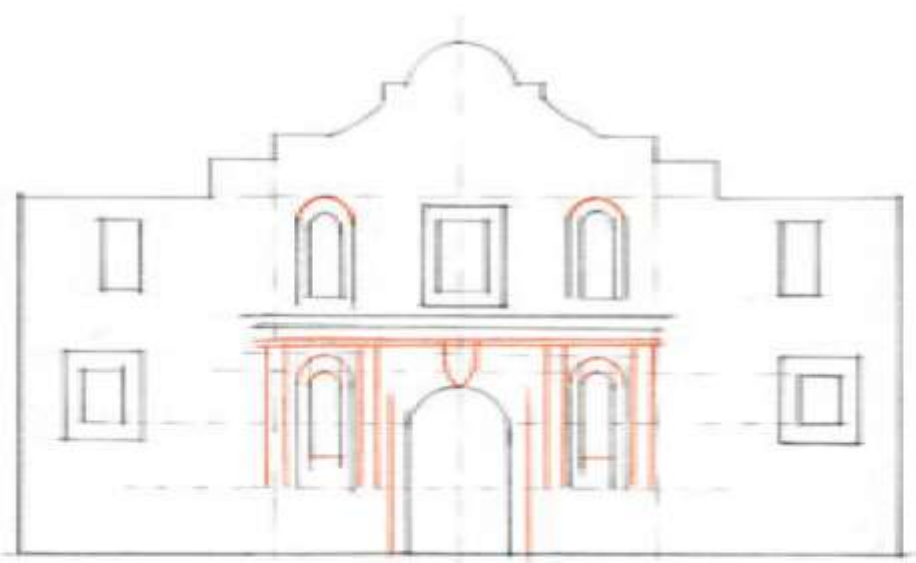
**Step 1:** Draw a base and center line. Then draw a large rectangle on top of the baseline. Add a second, almost square, rectangle inside the first.



**Step 2:** Add rectangles to the top. Then lightly draw horizontal guidelines. Use these to begin to draw windows. Add two horizontal lines for part of the ledge.

**Step 3:** Draw half-circles and curved lines on top. Then arch the top of some of the windows and the door. The bottom of the windows should be slightly below the guidelines. Start drawing the lines for the bottom windows, measuring off the top windows.

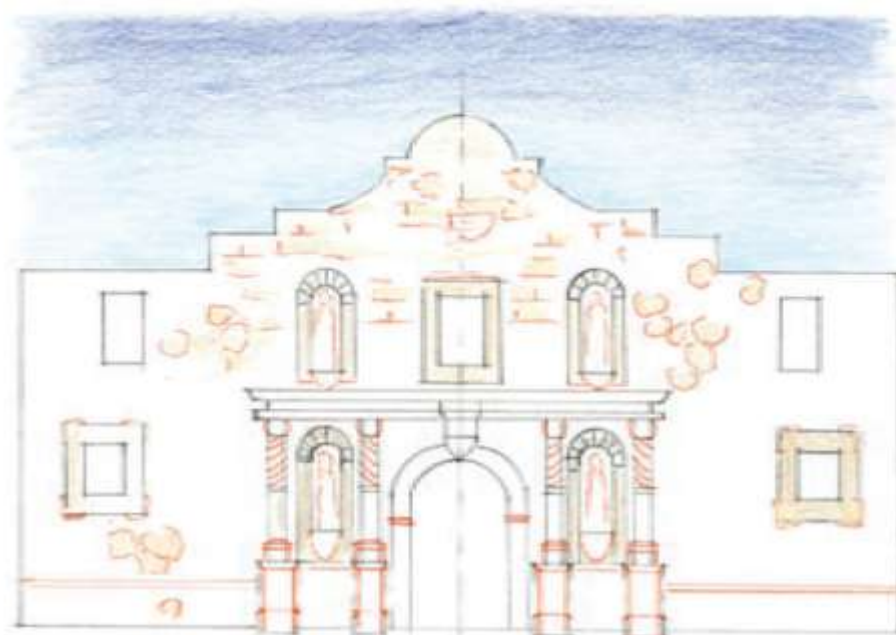
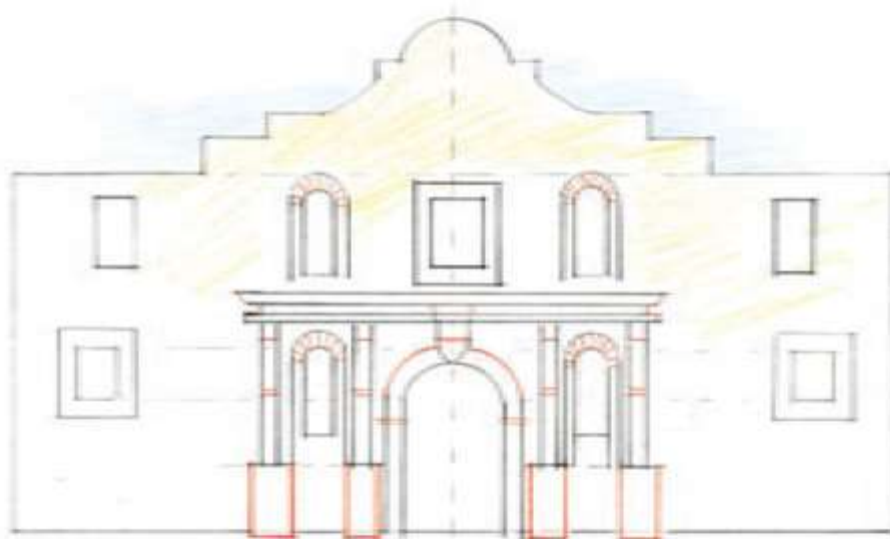




**Step 4:** Add the arches over the windows. Then start drawing the lines for columns.

**Fun Fact:** Some very famous Americans died at the Alamo, including Jim Bowie and Davy Crockett.

**Step 5:** Add the arch on top of the door. Then add lines for bricks in the window arches. Now draw small rectangles on the bottom of the columns. Also add details to the ledge and columns as shown. You may start coloring the sky light blue and the Alamo light yellow now, or continue on for more detail.



**Step 6:** Add the final touches to the designs on the columns. Then draw lines for bricks and rough circles for rocks on the walls. When coloring the sky, start light at the bottom and get darker towards the top. This adds excitement and drama to your drawing.



**Step 7:** As you begin the final color, trace over pencil lines with color pencil. Then erase the lead pencil. Color browns and greys over the wall to show battle smoke sears. Don't forget to use darker shading around the edges of the Alamo. Have fun coloring your picture!

During the 1830's, Mexico held much of the land that we now know as the western United States, including Texas.

Americans, who settled in Texas, had to become Mexican citizens and obey Mexican laws. Santa Anna, the dictator of Mexico, made laws that the Texans didn't like. They declared their independence from Mexico and prepared for war. After the defeat at the Alamo, Texans joined Sam Houston in fighting and eventually defeated the Mexicans. Their cry of "Remember the Alamo!" is remembered even today.